



Sports Hall of Fame

2012 INDUCTION CEREMONY

Presented by the Nanaimo Museum

RECEPTION PROGRAM

Saturday, September 22th, 2012

Presented by the Nanaimo Museum

Honouring the Nanaimo Sports Hall of Fame 2012 Inductees



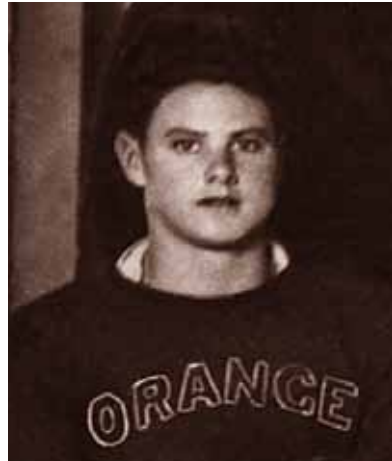
Don Ashbee,
Athlete - Lacrosse



Allison Forsyth,
Athlete - Skiing



Mary Thomasson (Frizzell)
Pioneer



Jim Gold
Builder



NANAIMO MUSEUM

2012 Sports Hall of Fame Induction Ceremony Program

12:00 pm - 1:00 pm

Lunch Buffet - Cocktail Style

1:00 pm - 1:30 pm

Alumni & 2012 Inductee Procession

MC: Tom Hickey, Sports Hall of
Fame Committee

MLA, Leonard Krog

Mayor, John Ruttan

1:30 pm - 3:00 pm

Induction Presentations

Presenter

Inductee

Accepting

John Ruttan

Don Ashbee

Don Ashbee

Tom Harris

Allison Forsyth

Allison Forsyth

Bill Bestwick

Jim Gold

Bob Gold

Tyler Heisterman

Mary Thomasson (Frizzell)

Meghan McDonald
& Kyle Young

Closing Remarks
2012 Case Unveiling and
Photo Opportunities in the Lobby

2008 INDUCTEES

1914 Northfield Violets Pioneer – Soccer
1923 Nanaimo FC Wanderers Pioneer – Soccer
1956 IWA Nanaimo Timbermen Team – Lacrosse
Gerald Kazanowski Olympian 1984 & 1988
Athlete – Basketball
Phil Olsen Olympian 1976 Athlete – Javelin
Brenda Taylor Olympian 1988 & 1992
Athlete – Rowing
Larry Thomas Media
Hugh (Red) Thomson Olympian 1936
Pioneer – Mile Runner
F. Elwood Wylie Builder
Harry R. Wipper Builder

2009 INDUCTEES

Angie Dobie (Radonovich) Athlete - Basketball
Michael Edgson Athlete - Swimming
Bill English Builder
Lloyd Gilmour Builder - Official
Don MacRae Rink Team - Curling
John Sandland Pioneer (Athlete)
Ray Telford Athlete - Soccer
Douglas White Athlete - Lacrosse, Football

2010 INDUCTEES

Angela Chalmers Athlete - Track & Field
Michael Rhode Media
Frank Crane Builder
Leo Margolis Builder
Red Carr Builder
Barry Pederson Athlete - Hockey
1983 Malaspina Mariners Team - Soccer

2011 INDUCTEES

Ernest Edmunds Athlete - Soccer
Michelle Stilwell Paralympian 2000-2008
Athlete - Basketball & Racing
Alan Hill Athlete - Hockey
Larry McNabb Builder

Nanaimo Museum Board

John Manning - President
Bruno Dragani - V. President
Eveline O'Rourke - Secretary
Douglas Peterson - Treasurer
Directors - Rob Fletcher, Moira
Jenkins, Shirley Lance, Geraldine
Manson, Dr. Ralph Nilson, Ed
Yewchin

Sports Hall of Fame Committee

John Manning - Chair
Bill Bestwick, Tom Hickey,
Shirley Lance, Gerry Redmond,
Eleanor Whyte, Philip Wolf,
Mitch Wright

Selection Panel

Les Malbon, John Manning,
Ian Thorpe, Eleanor Whyte



NANAIMO MUSEUM

Port of Nanaimo Centre, 100 Museum Way, Nanaimo, BC, V9R 5J8
www.nanaimomuseum.ca | admin@nanaimomuseum.ca